



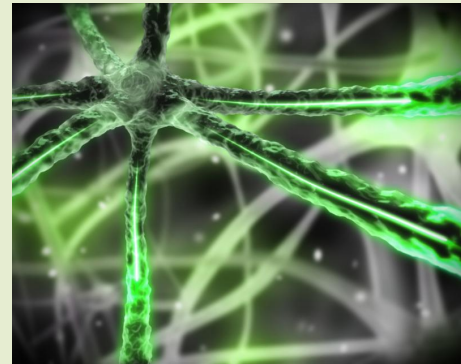
www.ClearspringRx.com

STAY CONNECTED



Low Dose Naltrexone – Customized Therapy for Pain and Autoimmune Diseases

New studies continue to support the benefits of using low dose naltrexone (LDN) to treat chronic pain and dermatologic conditions, and manage autoimmune disorders such as Crohn's disease, multiple sclerosis, and systemic sclerosis. Low dose naltrexone causes different pharmacological effects than higher doses of naltrexone which are used to treat addiction. Recently, LDN has been used as an off-label therapy for several chronic diseases including rheumatoid arthritis.



LDN could be a viable treatment option for chronic pain because other drugs used to treat chronic pain, such as nonsteroidal agents (NSAIDs) like ibuprofen, have adverse effects of gastrointestinal bleeding, renal injury, and increase a patient's risk of myocardial infarction or stroke. Conversely, LDN has minimal adverse effects, no drug-drug interactions, and is relatively inexpensive compared with other options for chronic pain.

Studies report that LDN has been used successfully to treat chronic inflammatory skin conditions and itching associated with eczema, cholestasis, burns, etc. Serious side effects have not been reported.

We work together with patients and their health care team to customize medications and solve problems that have not responded to traditional therapy or commercially available drugs. Your questions are welcome!

©Storey Marketing. All Rights Reserved.

Be sure to follow [@ClearspringPharmacy](https://www.instagram.com/ClearspringPharmacy) on Instagram to keep up with the latest happenings at the pharmacy and important health information!



Download our App

ClearSpring mobileRx app allows you to refill prescriptions on your mobile device at your convenience. You can refill multiple prescriptions on a mobile device by entering your prescription numbers, scanning the barcode on the prescription bottles or using your Patient Profile.

LEARN MORE



Two-Way Text Communication

At ClearSpring Pharmacy, we now offer two-way text communication where we can communicate conveniently about your prescription, refill status, insurance, etc. Ask your pharmacist for details.



Littleton

8031 Southpark Circle, Suite B
Littleton, CO 80120
303.707.1500 (phone)
303.707.1717 (fax)

Shop our Littleton
Location



Cherry Creek

201 University Blvd. #105
Denver, CO 80206
303.333.2010 (phone)
303.333.2208 (fax)

Shop our Cherry
Creek Location



ClearSpring Pharmacy's Littleton location is a PCAB® Accredited Compounding Pharmacy. [Learn more about PCAB® Accreditation.](#)



We care about our patients and want to provide you with quality information about your health. If you ever have questions or would like more information, please feel free to ask. We look forward to caring for you and your family.